

VICE PRESIDENT INGERSOLL DUE TO RETURN.

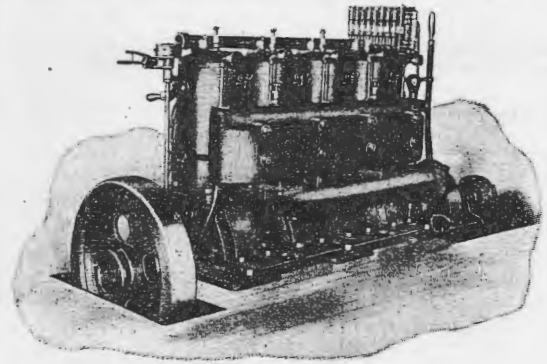
It was expected at the offices of A. M. Ingersoll, vice president of the extension of the Chicago, Milwaukee & St. Paul Railway, that he would reach Tacoma from Chicago Wednesday of last week. It is probable that Mr. Ingersoll, upon his arrival here, will have several important announcements to make regarding work of this company at Tacoma and in Washington.

Mr. Ingersoll was at Chicago attending the reorganization of the Chicago, Milwaukee & St. Paul road, Western extension, and which will make Tacoma the Western traffic center of this road. By the change wrought at this meeting this road becomes, from Moberg west, the Chicago, Milwaukee & Puget Sound Railway. It is understood the capital stock has been increased and that a bond issue is being provided for the development of the new project.

President H. R. Williams will retain his position with jurisdiction extending from the Pacific Coast to the Missouri River. E. J. Pierson continues as chief engineer; H. H. Field, general counsel; E. W. Cook, secretary. E. D. Sewall, of Chicago, president of the South Dakota and Montana companies, is made a vice president. S. G. Ranney, treasurer of the C., M. & St. P., is treasurer, and A. H. Barkley, treasurer of the Washington company, becomes assistant treasurer. W. N. D. Winne is general auditor and C. E. Kent accountant.

Buxbaum & Cooley, the marine electricians, have been overhauling the plant on the Indianapolls, the Chippewa, and have made extensive changes to the Dora.

T & M Reversible Marine Engines



Sizes 1 1-2 H. P. to 130 H. P.

Equipped with T & M Speed Wheels

Get a Catalogue or call at

Perine Machinery Co.

816 First Ave. South, Seattle

and see the good points of the T & M's

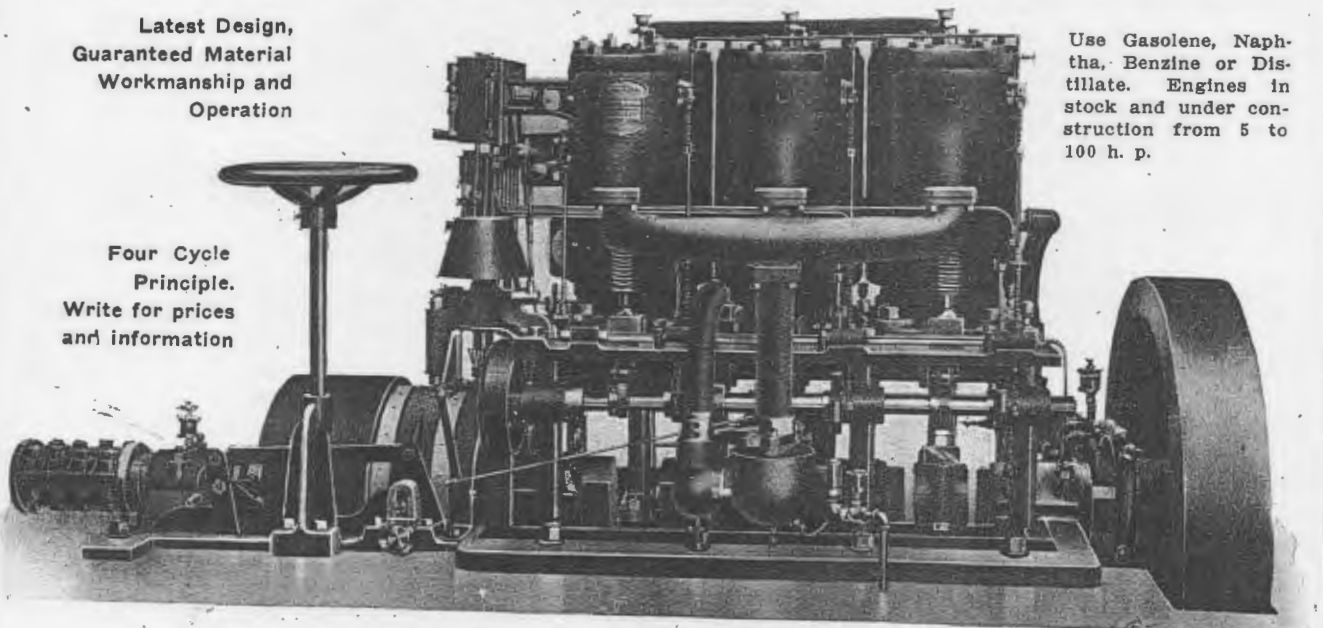
Termaat & Monahan Co.

Oshkosh, Wisconsin

THE TROYER-FOX HEAVY DUTY MARINE GAS ENGINE

Latest Design,
Guaranteed Material
Workmanship and
Operation

Four Cycle
Principle.
Write for prices
and information



Use Gasolene, Naphtha, Benzine or Distillate. Engines in stock and under construction from 5 to 100 h. p.

3 Cylinder, 35 H. P. Weight with Flywheel 3445 pounds.

Built by

ASTORIA IRON WORKS, Astoria, Ore.